

ivydale road

122-148 Ivydale Road
London • SE15 3BS

overview

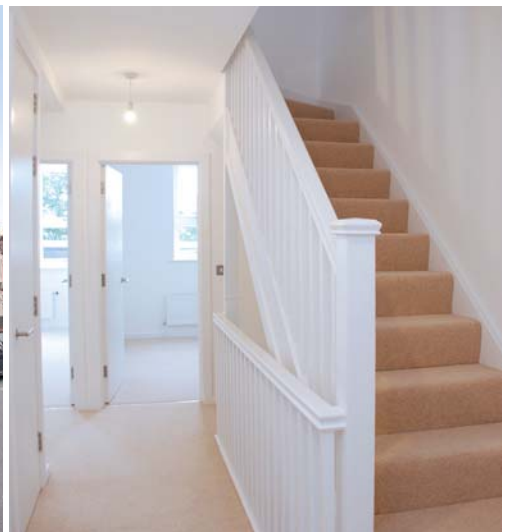
Mixed tenure housing for rental, shared ownership and private sale

14 traditionally built 'Victorian' style four bedroom houses

Solar photo-voltaic panels

Clear and prepare site

Associated works and landscaping



client	Family Mosaic Housing Services
value	£2.5M
started	March 2012
completed	February 2014
form of contract	JCT 2011 Design & Build Contract Incorporating Amendments