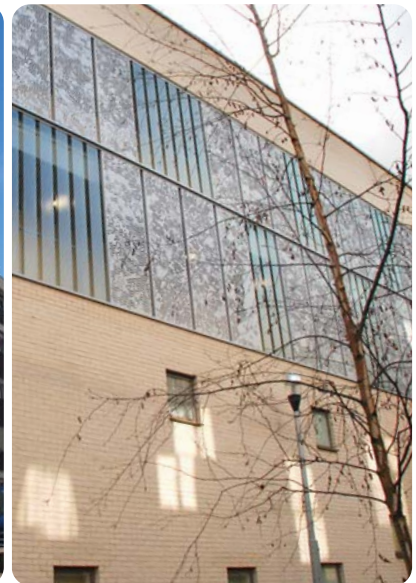


marcon place

Edward De Vere Court • Marcon Place
Hackney • London • E8 1LZ



overview

Demolition of existing structures and site clearance

Design and construction of 21 residential units for affordable rent with a mix of family units, smaller units and wheelchair accessible units

Brick and block 4/5 storey construction

Photo-voltaic panels plus green and brown roofs

All external ancillary works plus hard and soft landscaping



client

Genesis Housing Association

contract

JCT Design & Build 2011

architect

Stephen Davy Peter Smith Architects

value

£3.3M

complete

July 2016