

queen mother hospital for animals

QMHA • Royal Veterinary College
Hawkshead Lane • North Mimms • Hertfordshire

overview

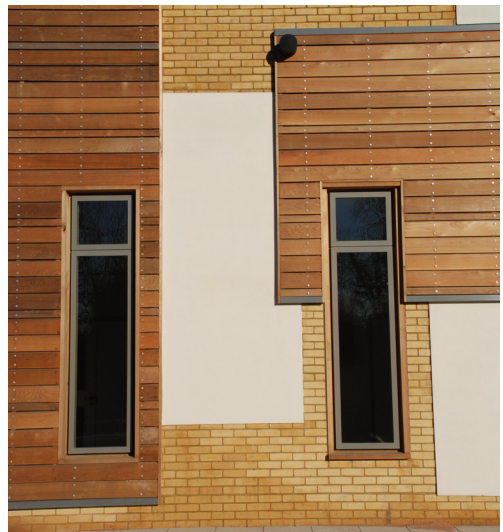
Two new-build single storey extensions containing operating theatres, x-ray and scan facilities, plus offices and consulting rooms

Alterations within existing building

Construction, fitting out and finishing

Associated engineering services

Car parking, other external works and drainage



| | |
|------------------|--------------------------|
| client | Royal Veterinary College |
| value | £5.8M |
| started | December 2006 |
| completed | July 2008 |
| form of contract | JCT2005 with quantities |