

nightingale primary school

Ashbourne Avenue • South Woodford
London • E18 1PL



overview

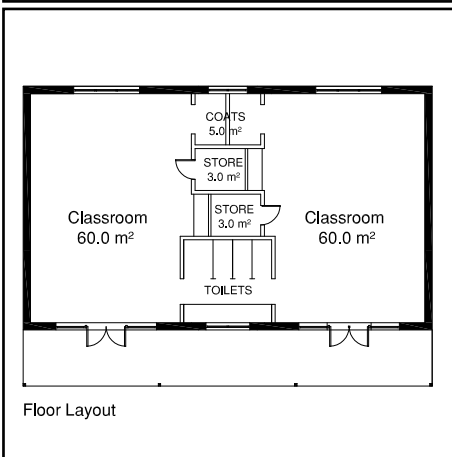
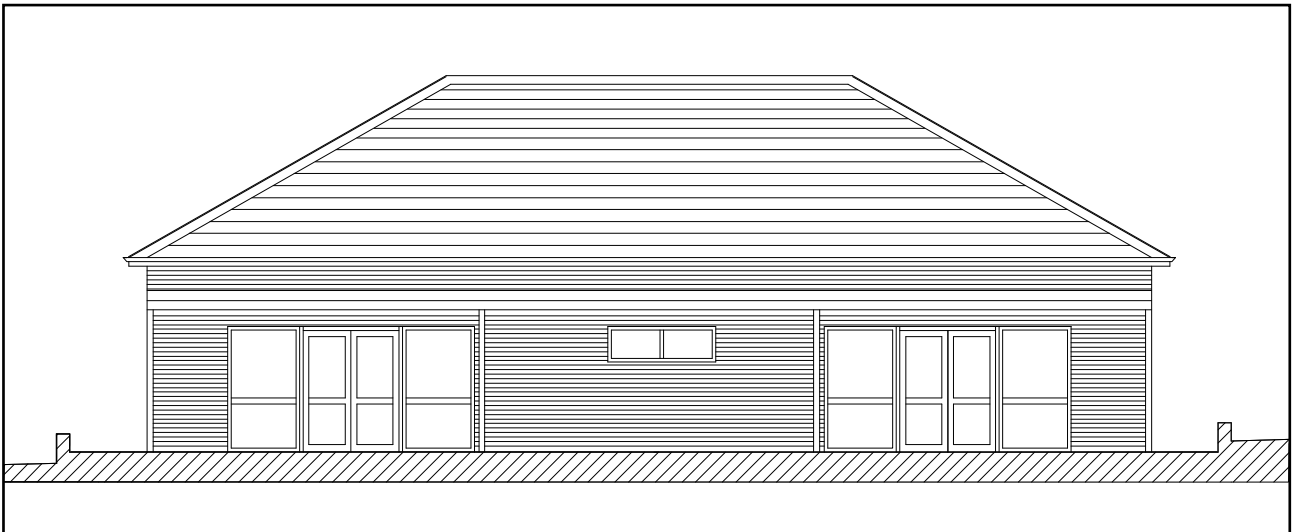
New single storey building

Traditional brick and block construction with pitched roof

Two classrooms and storage areas

Soft play area, new fences and other external works

Close liaison with school including a time capsule event
and site safety poster competition



client

London Borough of Redbridge

value

£406k

complete

May 2015

form of contract

JCT Design & Build 2011