

tabernacle street

2A Tabernacle Street
London • EC2A 4LU



overview

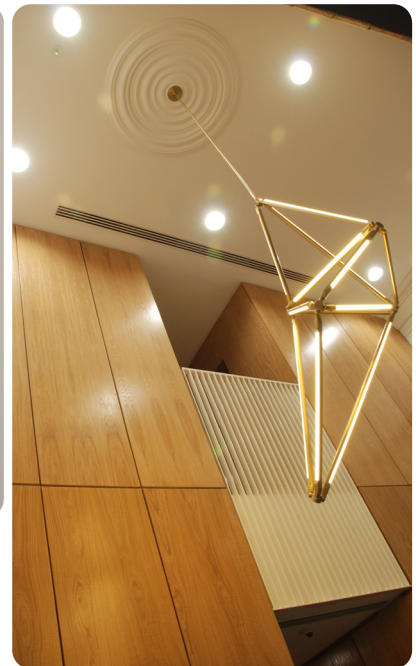
New build office building on fire damaged site

4 storeys plus basement and roof terrace

Reinforced concrete frame with post-tensioned slabs, brick facade and Tecu-brass standing seam cladding and roofing

Inner London with restricted access site

BREEAM compliant green roof and rainwater harvesting



client

Durley Investment Corporation

contract

JCT D&B 2011

value

Commercial in Confidence

complete

January 2015

major features

- Temporary works
- Demolition
- Groundworks
- Piling
- Steel frame
- Concrete frame
- Brick and block work
- Masonry
- Glazing
- Doors
- Security/fire alarm
- Data cabling
- Zinc standing seam roof
- Rainwater goods
- Partitions
- Suspended ceilings
- Decorations
- Flooring
- M&E
- Services
- Insulation
- D&B
- CDP
- DDA measures
- Lift
- Cladding

challenges

- Very restricted access surrounded by occupied buildings and an adjacent active construction site
- Adjoining owners would not permit the client to build to the boundary line.

mitigation

- The use of mini piling rigs which were lowered to basement level.
- A redesign of the foundations during construction to leave the potential to move in the external wall as referred to above. Which ultimately took place.

